



MAHA AGRO LTD

Electronic/Magnetic Water Conditioners

NAIROBI

PHNO: 0757444687/0711661599

VISION:

Our focus is clear

**“Perfecting Water
Conditioners”**



WHAT IS HARD WATER?

- ✓ Hard water is water which contains dissolved hardness minerals i.e. calcium and magnesium salts.
- ✓ The dissolved minerals present in hard water can accumulate in the form of a hard scale which can build up and eventually clog pipe and damage water-using appliance.
- ✓ These minerals also affect the ability of soap to clean kitchen and bath surfaces, dishware and laundry, and even human hair and skin.
- ✓ More than 80% of India is affected by 'moderately hard' to 'very hard' water.
- ✓ Agriculture Sector: When plants & crops are watered with hard water then a white coating layer is formed on the roots of the plants /crops and cell membranes die up to 80%.
- ✓ As a result of this plants/crops start to suffocate as well as decrease in total plant growth and low yield per acre.

SOLUTION FOR HARD WATER:

Wherever water hardness is concern, water softener or water conditioner is used to solve your hard water problem.

Water Conditioners is commonly used to reduce hard water's adverse effects.

- No Chemicals
- No Salts
- No Maintenance
- No Recurring Expenses
- No Filters/ Resins Replacement
- Fit & Forget
- One Time Investment & Life Time Benefits

PHYSICAL WATER CONDITIONERS:

- PWC helps to minimizing the adverse affects of many of the undesirable substances in the supplied water. Such as loosing ability to stick & cause corrosion.
- No algae formation.
- Results have shown e-colli bacteria problems resolved.
- The unit requires - No Maintenance.
 - No Chemicals
 - No Salts
 - Absolutely NO recurring Cost

MULTI FLOW DESIGN:

- Autofill Systems is the only company in India to provide earthing concept in Physical Water Conditioners.
- Multi flow design (minimum two water conditioners).
- Pipe Type: SS 304 (no one can provide earthing to any plastic pipe)
- Due to earthing, result enhanced by minimum 50%.
- Special fitting for SS pipe used.
- MS powder coated panel- Specially designed for our water conditioner only.
- L&T approved powder coating standard used by vender.

TARGET MARKET FOR WATER CONDITIONER:

- ✓ Agriculture & Green House
- ✓ Domestic & Commercial Space
- ✓ Industries
- ✓ Concrete Industries
- ✓ Cooling Towers

EWC (ELECTRONIC WATER CONDITIONER) SPECIFICATIONS:

- Input Voltage: 230 AC 50 Hz. Single phase for domestic models and 440 V AC 50 Hz for agriculture & industrial models.
- Input Current: 50mA AC.
- Output Channels: for 1 inch to 2 inch one numbers for 2.5 inch to 4 inch two numbers.
- Output Voltage: 15 V DC to coil.
- Output Current Amplitude: 10 A peak maximum.
- Output Signal: AC square signal with sweeping frequency.
- Coil Frequency: Swept frequency from 1 kHz to 15 kHz.
- Protection: IP 65 to electronic circuit
- Operating Temperature: 10°C to 60°C.

WORKING OF MWC (MAGNETIC WATER CONDITIONER):

- Water conditioners use Rare Earth Magnets, which produce permanent magnetic fields.
- These magnetic fields break heavy mineral compounds & salts dissolved in water.
- Due to these magnetic fields, salt particles of 40 microns break into 10 no. of 4 microns.
- Water conditioners break ionic bonds, as a result of breakage of ionic bonds water becomes more solvent compared to non-treated water.
- The hexagonal water molecule cluster won't allow the bonding of minerals to it, magnetically structured water acts as a Good Solvent which removes scaling from pipes and won't allow new scaling to take effect.

SALIENT FEATURES OF PWC (PERFECTING WATER CONDITIONER):

- Fit & forget maintenance free.
- No external power required (In Magnetic Water Conditioners)
- No salt or chemicals needed.
- No maintenance, easy to install.
- Mains pressure and flow rate unaffected.
- Retains healthy minerals.
- Little space required and safe.
- Low running cost, negligible power consumption.
- Effective on RPVC, UPVC, CPVC, copper, brass, SS304, SS316.
- No waste of water or chemical discharge.
- Available in 1", 1.5", 2", 2.5", 3", 4" & any customized size.

ADVANTAGES IN DOMESTIC SECTOR:

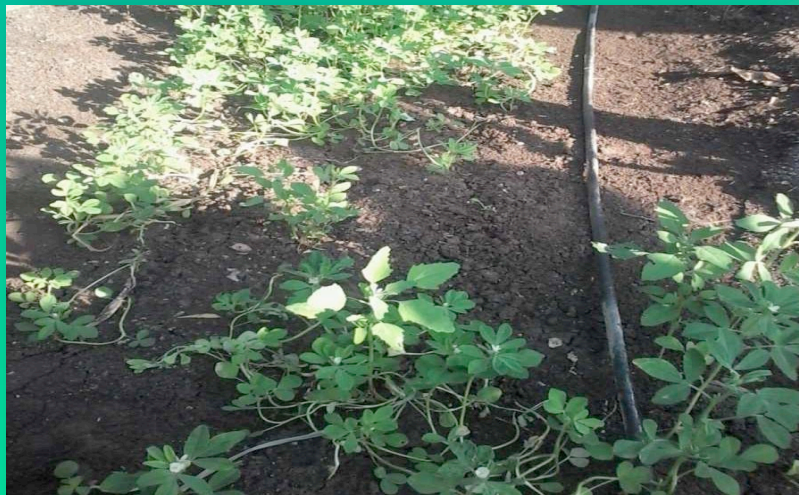
- While washing cloths less water, detergent, and soap is required for better results.
- The user will feel fresh after taking bath with treated water and hair will remain silky.
- Treated water helpful to prevent hair fall & skin itching (specially in winter)
- Gas & electric water heater will require less power as there no scaling on heating element.
- All home appliances such as tiles, floor, bathroom fittings, washing machine, shower head will remain scale-free and also removes old deposited scale from all surface including pipeline.

ADVANTAGES IN AGRICULTURE:

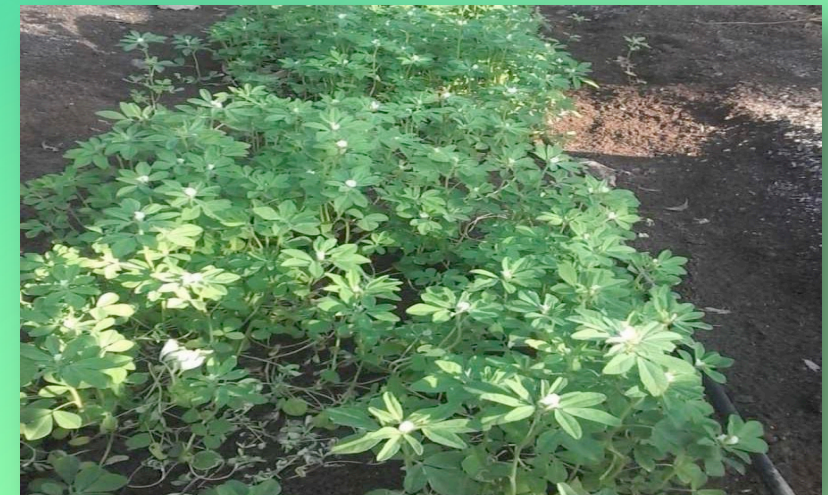
- Crops production increases up to 30%.
- 15% less water required for irrigation.
- Very hard extreme non suitable water also can be used for irrigation (Our experience 8000 PPM)
- Less fertilizer is required.
- Drip irrigation systems & sprinkler systems will remain clean, scale-free and maintenance free even in high TDS water (Our experience 8000 PPM).
- Useful and beneficial for entire agriculture segment.

RESULTS FROM AGRICULTURE:

Non Treated Water



Treated Water - MWC



Testing of Soil after water conditioner

Before Water Conditioner



**After two years water conditioner
at 2500 TDS on Onion Crops**

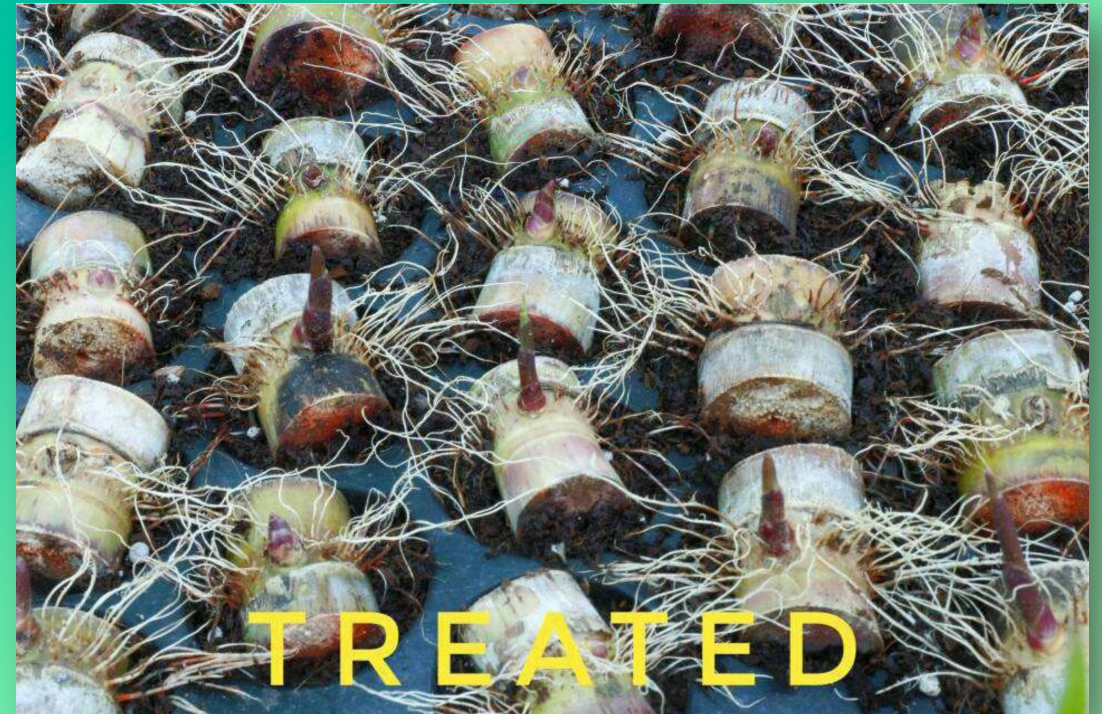


Continue...

Non- Treated



Treated Water



TECHNICAL SPECIFICATIONS:

Model No.	10 ECOP 22	20 ECOP22	25 ECOP44	30 ECPO44	40ECOP44
Product Name	Physical Water Conditioner	Physical Water Conditioner	Physical Water Conditioner	Physical Water Conditioner	Physical Water Conditioner
Max. Flow Rate	Depends on applications	Depends on applications	Depends on applications	Depends on applications	Depends on applications
MOC	Copper 99.99% purity	Copper 99.99% purity	Copper 99.99% purity	Copper 99.99% purity	Copper 99.99% purity
Input Connection	2 inch UPVC pipe 40 sch	2 inch UPVC pipe 40 sch	2.5 inch UPVC Flange connection PCD 127 mm (4 holes) make supreme	3 inch UPVC Flange connection PCD 147 mm(4 holes) make supreme	4 inch UPVC Flange connection PCD 178mm (8 holes) make supreme
Output Connection	2 inch UPVC pipe 40 sch	2 inch UPVC pipe 40 sch	2.5 inch UPVC Flange connection PCD 127 mm (4 holes) make supreme	3 inch UPVC Flange connection PCD 147 mm (4 holes) make supreme	4 inch UPVC Flange connection PCD 178 mm (8 holes) make supreme
Power Input	220V AC 50 HZ	220V AC 50 HZ	440 V AC 50 HZ	440 V AC 50 HZ	440 V AC 50 HZ
Power Consumption in Watts	25 watt	25watt	25watt	50 watt	50 watt
MOC of Panel	Mild Steel Powder Coated. Powder Coating approved by L & T	Mild Steel Powder Coated. Powder Coating approved by L & T	Mild Steel Powder Coated. Powder Coating approved by L & T	Mild Steel Powder Coated. Powder Coating approved by L & T	Mild Steel Powder Coated. Powder Coating approved by L & T
Panel Size	27 X 12 X 8 inches	27 X 18 X 8 inches	36 X 16 X 8 inches	36 X 26 X 8 inches	36 X 26 X 8 inches
Weight	16 Kg	23 Kg	26 Kg	38 Kg	42 Kg

MOC means Material of Construction

TECHNICAL SPECIFICATIONS:

Model No.	Domestic Applications	Commercial Applications	Agriculture Applications	Industrial Applications
10 ECOP 22	1200 LPH	1200 LPH	1200 LPH	400 LPH (Circulation)
20 ECOP 22	1800 LPH	1800 LPH	1800 LPH	600 LPH (Circulation)
25 ECOP 44	4800 LPH	4800 LPH	50000 LPH	N/A
30 ECOP 44	7200 LPH	7200 LPH	75000 LPH	N/A
40 ECOP 44	9600 LPH	9600 LPH	100000 LPH	N/A

Notes:

- All models have multiflow design means each and every water cylinder is designed for specific flow rate.
- Same model gives different flow rate depending upon applications.
- Input/ Output connections and plumbing material also depend upon applications.
- Our designs and products does not depend on pump size or water pressure etc.
- It depends on only one factor LPH i.e liter per hour.
- In industrial applications circulation through water conditioner is essential to get max. good results.

Thank you